

KEY PLAN
1:50,000

COORDINATE LIST EXPRESSED IN FEET

| Point | Easting | Northing | Point | Easting | Northing |
|-------|------------|------------|-------|------------|------------|
| 928 | 383123.994 | 401469.341 | 5138 | 383676.520 | 400588.727 |
| 929 | 383342.222 | 400757.847 | 5139 | 383685.181 | 400561.066 |
| 4616 | 383109.536 | 403348.765 | 5140 | 383737.690 | 400407.546 |
| 4617 | 383394.156 | 401475.457 | 5141 | 383801.019 | 400222.395 |
| 4618 | 384210.313 | 400740.681 | 5142 | 383872.865 | 400012.342 |
| 4620 | 383684.269 | 400917.606 | 5143 | 383890.827 | 399959.829 |
| 4621 | 383760.912 | 401351.928 | 5144 | 383956.900 | 399833.714 |
| 4622 | 383621.712 | 400938.645 | 5145 | 383973.081 | 399811.781 |
| 4623 | 383763.677 | 401360.463 | 5146 | 384082.806 | 399663.056 |
| 4625 | 383527.305 | 401564.008 | 5147 | 384119.479 | 399613.348 |
| 4626 | 383505.451 | 401559.033 | 5148 | 384142.619 | 399580.227 |
| 4627 | 383496.830 | 401453.475 | 5149 | 384180.394 | 399597.178 |
| 4628 | 383460.559 | 401510.039 | 5150 | 384203.539 | 399885.404 |
| 4629 | 383374.717 | 401537.396 | 5151 | 384450.250 | 400577.067 |
| 4630 | 383375.274 | 401620.308 | 5152 | 384440.736 | 400618.474 |
| 4636 | 383041.367 | 401734.098 | 5153 | 384385.143 | 400677.268 |
| 4669 | 383823.330 | 401330.476 | 5154 | 384331.300 | 400738.531 |
| 4679 | 383435.080 | 401578.448 | 5155 | 384289.306 | 400795.892 |
| 4697 | 384320.290 | 401203.198 | 5156 | 384264.853 | 400864.595 |
| 5111 | 383138.410 | 401422.339 | 5157 | 384249.302 | 400934.947 |
| 5112 | 383198.557 | 401226.241 | 5158 | 384253.077 | 401023.559 |
| 5113 | 383329.042 | 400800.817 | 5159 | 384271.817 | 401104.609 |
| 5114 | 383405.568 | 400556.845 | 5160 | 383828.378 | 399938.469 |
| 5115 | 383478.517 | 400325.374 | 5161 | 383489.399 | 399148.495 |
| 5116 | 383549.645 | 400099.685 | 5162 | 384332.694 | 400110.964 |
| 5117 | 383618.916 | 399879.883 | 5163 | 383903.789 | 399794.531 |
| 5118 | 383694.723 | 399639.346 | 5164 | 383634.476 | 400976.541 |
| 5119 | 383761.871 | 399426.280 | 5165 | 383624.927 | 400979.519 |
| 5120 | 384029.696 | 399623.873 | 5166 | 383623.331 | 400974.780 |
| 5121 | 383904.240 | 399793.921 | 5167 | 383621.734 | 400970.040 |
| 5122 | 383825.537 | 399946.775 | 5168 | 383631.283 | 400967.062 |
| 5123 | 383751.480 | 400163.294 | 5169 | 383600.467 | 400623.511 |
| 5124 | 383674.876 | 400387.258 | 5170 | 383590.929 | 400620.505 |
| 5125 | 383622.733 | 400539.706 | 5171 | 383591.918 | 400615.574 |
| 5126 | 383601.436 | 400618.574 | 5172 | 383592.907 | 400610.644 |
| 5127 | 383592.190 | 400800.391 | 5173 | 383602.444 | 400613.649 |
| 5128 | 383632.879 | 400971.802 | 5174 | 383749.861 | 400168.027 |
| 5129 | 383698.147 | 401165.581 | 5175 | 383740.324 | 400165.021 |
| 5130 | 383455.623 | 401304.016 | 5176 | 383741.942 | 400160.288 |
| 5131 | 383449.316 | 401252.313 | 5177 | 383743.561 | 400155.556 |
| 5132 | 383423.078 | 401037.233 | 5178 | 383753.098 | 400158.562 |
| 5133 | 383394.226 | 400800.712 | 5179 | 383901.285 | 399797.954 |
| 5134 | 383407.421 | 401317.305 | 5180 | 383893.238 | 399792.017 |
| 5135 | 383762.047 | 401148.529 | 5181 | 383896.200 | 399787.989 |
| 5136 | 383700.781 | 400966.573 | 5182 | 383899.161 | 399783.960 |
| 5137 | 383656.686 | 400779.700 | 5183 | 383907.208 | 399789.897 |

LEGEND

| | |
|-------------------------------|-------|
| FOUND SURVEY MARKER | □ |
| PLACED SURVEY MARKER | ■ |
| LANDS DEALT WITH BY THIS PLAN | |
| RADIUS | R |
| CENTRE OF CURVATURE | CC |
| LENGTH OF ARC | A |
| POINT OF CURVATURE | P.C. |
| WITNESS | WT. |
| FENCE | -X-X- |
| HYDRO POLE | ● |
| TELEPHONE POLE | ○ |
| GUY WIRE | —●— |
| CALCULATED POINT | ○ |

NOTES

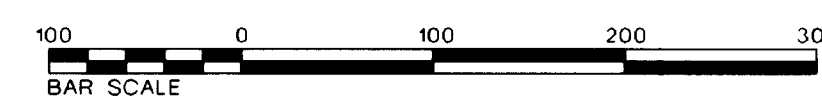
1. THE FIELD WORK FOR THIS SURVEY WAS EXECUTED OCTOBER 20, 2005.
2. FIELD MEASUREMENTS HAVE BEEN ADJUSTED BY THE COMPASS RULE AND SCALE FACTOR HAS NOT BEEN APPLIED.
3. AZIMUTHS ARE GRID.
4. ALL GRID AZIMUTHS AND COORDINATES ARE REFERENCED TO THE PRINCE EDWARD ISLAND STEREOGRAPHIC PROJECTION, PRIOR TO JULY 1, 1979.
5. ALL DIMENSIONS ARE GIVEN IN FEET, UNLESS NOTED.

| REVISION | DESCRIPTION | DATE |
|----------|--|--------------------|
| 2 | ADDITION OF EASEMENTS | SEPTEMBER 12, 2006 |
| 1 | ADDITION OF 30m (98.4') WIDE RIPARIAN ZONE | MARCH 7, 2006 |

LOCUS SURVEYS LTD.
 16 PARK ROAD
 P.O. BOX 35
 HENRIKSTON, P.E.I.
 C0B 1M0
 PHONE 902-836-3823
 FAX 902-836-5463
 TOLL FREE NUMBER 1-888-328-8888

PLAN OF SURVEY SHOWING
 LOTS B-1 TO B-20,
 BEING PHASE 2 OF THE
 GRANVILLE ON THE WATER
 SUBDIVISION

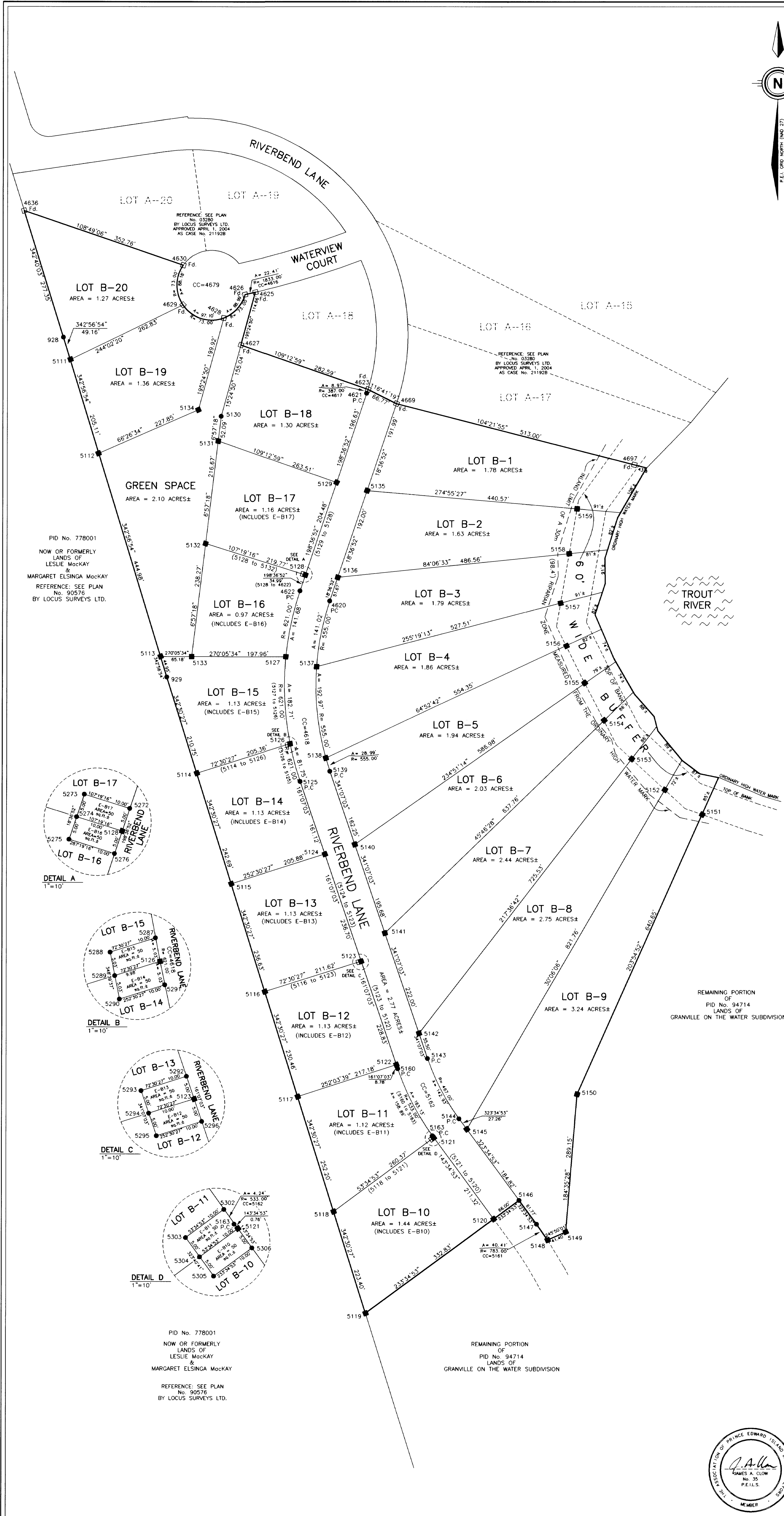
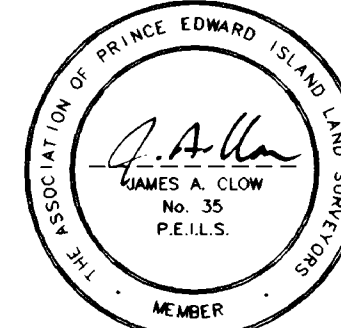
SCALE 1" = 100'



NORTH GRANVILLE QUEENS COUNTY LOT 21 P.E.I.
 DRAWN BY: N.L.G. ORTHO No. 11L 06 1E2
 DRAWING No. 03280PH2 P.I.D. No. 94714

I, JAMES A. CLOW, PRINCE EDWARD ISLAND LAND SURVEYOR, DO HEREBY CERTIFY THAT THIS SURVEY WAS EXECUTED UNDER MY DIRECTION AND SUPERVISION, AND THAT THIS PLAN IS A TRUE AND CORRECT REPRESENTATION OF SAID SURVEY.

James A. Clow
 JAMES A. CLOW P.E.I. LAND SURVEYOR
 JANUARY 25, 2006.
 DATE



PID No. 778001
 NOW OR FORMERLY
 LANDS OF
 LESLIE MacKAY
 &
 MARGARET ELSINGA MacKAY
 REFERENCE: SEE PLAN
 No. 90576
 BY LOCUS SURVEYS LTD.

PID No. 778001
 NOW OR FORMERLY
 LANDS OF
 LESLIE MacKAY
 &
 MARGARET ELSINGA MacKAY
 REFERENCE: SEE PLAN
 No. 90576
 BY LOCUS SURVEYS LTD.

REMAINING PORTION
 OF
 PID No. 94714
 LANDS OF
 GRANVILLE ON THE WATER SUBDIVISION