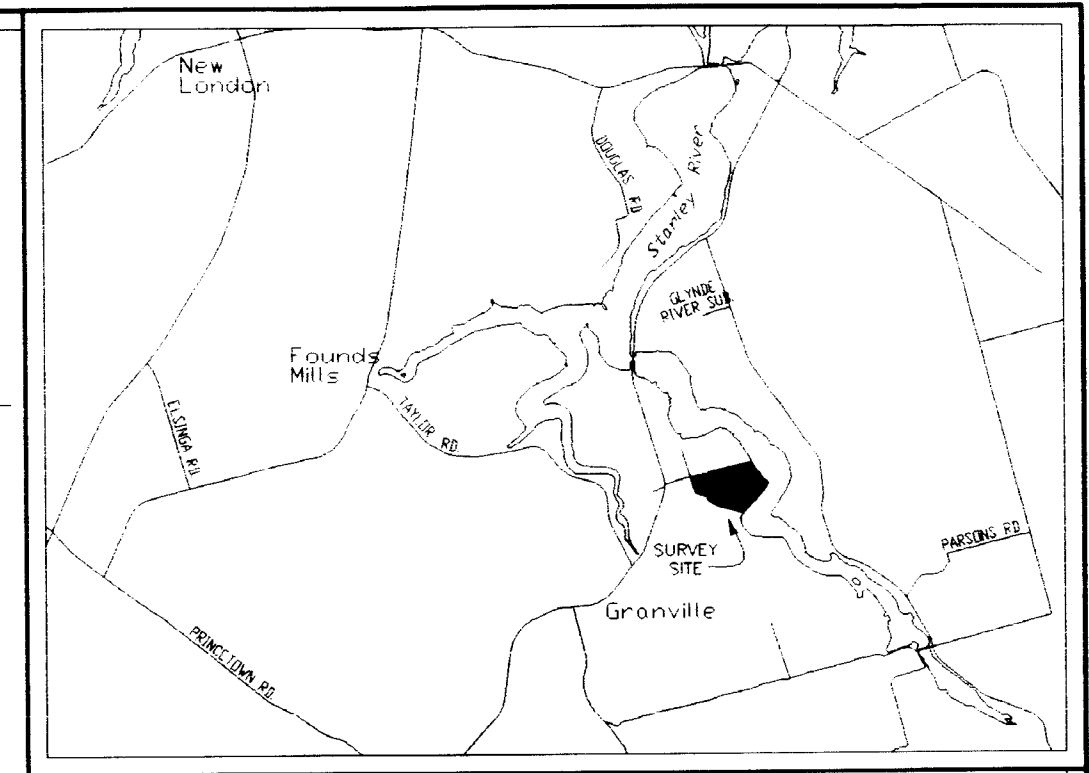
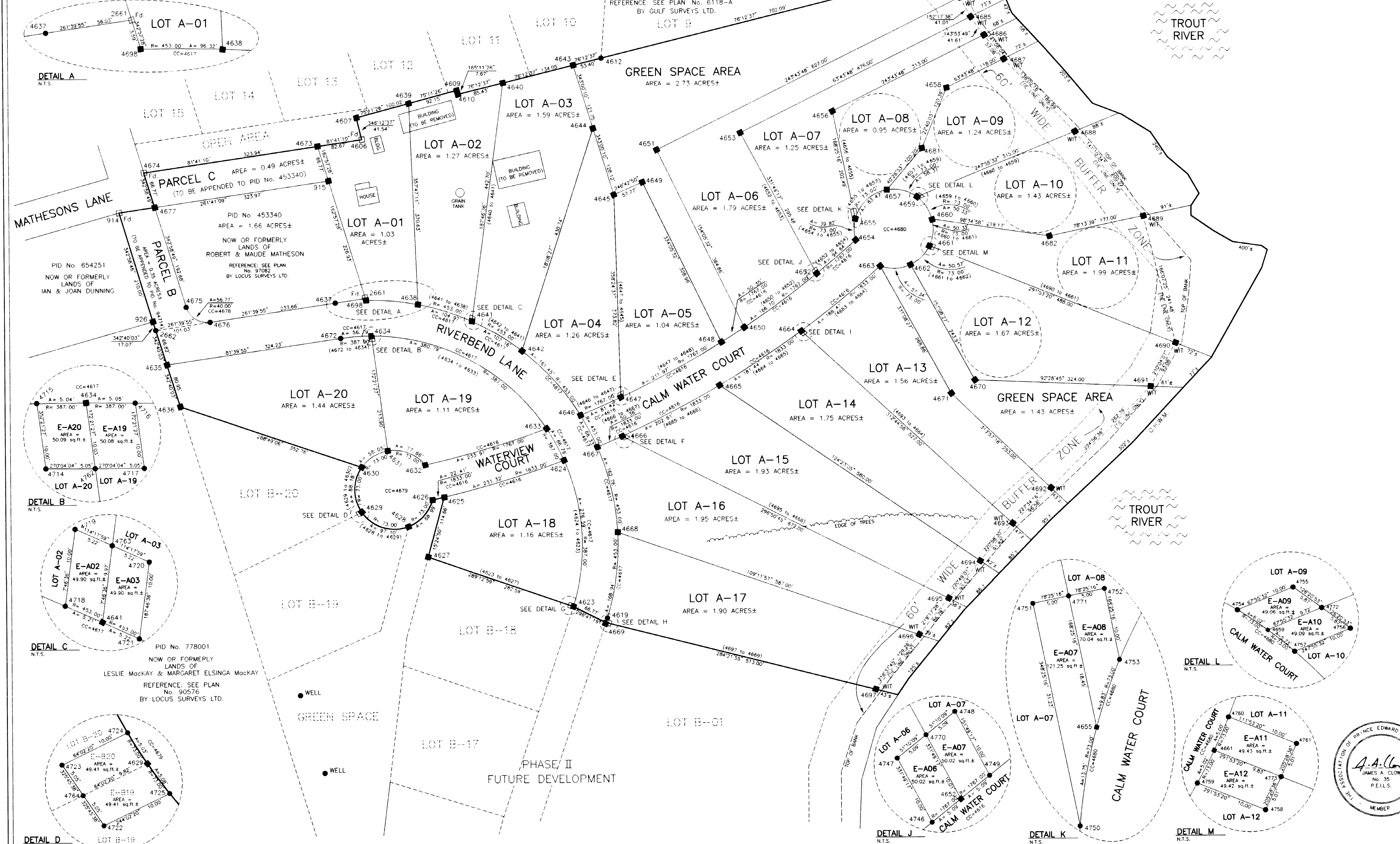


COORDINATE LIST EXPRESSED IN FEET

Point	Easting	Northing	Point	Easting	Northing	Point	Easting	Northing	Point	Easting	Northing	Point	Easting	Northing
914	382930.790	402092.260	4639	383466.443	402290.454	4669	383823.330	401330.476	4715	383389.606	401862.430	4745	384199.655	401862.962
915	383317.420	402148.760	4640	383540.465	402326.950	4670	384508.126	401773.914	4716	383399.698	401862.417	4746	384213.521	401969.088
926	382992.257	401891.457	4641	383580.563	401888.326	4671	384464.336	401749.781	4717	383401.027	401852.506	4747	384208.798	401977.903
2661	383383.924	401931.794	4642	383672.128	401833.144	4672	383338.058	401858.369	4718	383575.806	401890.442	4748	384216.725	401984.283
2662	382997.344	401875.158	4643	383770.650	402358.901	4673	383297.852	402212.597	4719	383577.159	401900.350	4749	384221.447	401975.469
4606	383379.650	402224.550	4644	383806.240	402242.472	4674	382977.314	402165.759	4720	383586.665	401896.057	4750	384286.948	402059.360
4607	383369.750	402264.890	4645	383843.692	402119.950	4675	383053.255	401917.672	4721	383585.312	401886.149	4751	384280.679	402089.957
4609	383555.530	402314.010	4646	383779.458	401713.683	4676	383097.302	401889.802	4722	383368.728	401528.919	4752	384290.476	402091.964
4610	383557.600	402306.590	4647	383854.063	401746.276	4677	382996.858	402101.915	4723	383363.043	401537.273	4753	384292.483	402082.168
4612	383822.510	402371.630	4648	384040.488	401846.893	4678	383091.504	401929.380	4724	383372.034	401541.650	4754	384398.133	402115.857
4615	384452.500	402526.250	4649	383896.758	402142.789	4679	383435.080	401578.448	4725	383377.719	401533.296	4755	384407.400	402119.615
4616	383109.536	403348.765	4650	384082.895	401874.024	4680	384359.734	402053.773	4726	383849.124	401743.991	4756	384416.854	402112.658
4617	383394.156	401475.457	4651	383923.480	402202.212	4681	384412.934	402202.065	4727	383848.847	401753.987	4757	384407.587	402108.900
4619	383823.459	401330.861	4652	384217.487	401972.272	4682	384647.271	402038.768	4728	383858.723	401758.576	4758	384432.605	402014.196
4623	383763.677	401360.463	4653	384077.953	402232.734	4684	384485.723	402479.723	4729	383859.001	401748.580	4759	384423.326	402017.924
4624	383748.618	401630.783	4654	384289.588	402033.559	4685	384504.791	402443.413	4730	383859.386	401667.671	4760	384427.635	402026.970
4625	383527.305	401564.008	4655	384289.281	402072.886	4686	384529.310	402409.793	4731	383850.464	401672.186	4761	384436.915	402023.241
4626	383505.451	401559.033	4656	384248.637	402271.258	4687	384565.144	402365.382	4732	383862.233	401677.437	4762	383395.982	401852.512
4627	383496.830	401453.475	4657	384347.928	402125.812	4688	384695.026	402230.864	4733	383871.155	401672.921	4763	383351.912	401898.203
4628	383460.559	401510.039	4658	384459.331	402313.155	4689	384820.547	402074.860	4734	383762.082	401355.724	4764	383365.886	401533.096
4629	383374.717	401557.396	4659	384403.117	402112.483	4690	384878.460	401840.452	4735	383752.639	401359.015	4765	383385.785	401756.282
4630	383375.274	401620.308	4660	384430.555	402071.476	4691	384831.823	401759.898	4736	383765.133	401365.251	4767	383754.165	401363.779
4631	383423.094	401650.458	4661	384425.641	402022.383	4692	384845.467	401574.175	4737	383755.690	401368.542	4768	383865.271	401670.296
4632	383492.340	401623.729	4662	384390.403	401987.528	4693	384851.112	401439.851	4738	383765.133	401365.251	4769	383754.165	401363.779
4633	383716.678	401689.347	4663	384334.570	401985.247	4694	384875.191	401509.025	4739	383821.729	401325.724	4770	384212.762	401981.093
4634	383394.647	401862.456	4664	384108.196	401868.745	4695	384455.937	401371.337	4740	383824.907	401335.233	4771	384193.534	401859.363
4635	383017.251	401811.370	4665	384046.459	401767.404	4696	384400.985	401304.178	4741	383831.418	401323.243	4772	384212.762	401981.093
4636	383041.367	401734.098	4666	383856.361	401674.805	4697	384320.290	401203.198	4742	384191.413	401856.963	4773	384412.127	402116.137
4637	383328.491	401923.672	4667	383810.091	401654.920	4698	383394.980	401928.364	4743	384184.070	401863.751	4774	384434.760	402018.719
4638	383480.759	401920.101	4668	383846.634	401497.214	4714	383390.936	401852.518	4744	384192.312	401869.750			

PID No. 897868  
 NOW OR FORMERLY LANDS OF  
 DAVID KENNEDY (EAGLES PATH ESTATES)  
 REFERENCE: SEE PLAN No. 6118-A  
 BY GULF SURVEYS LTD.



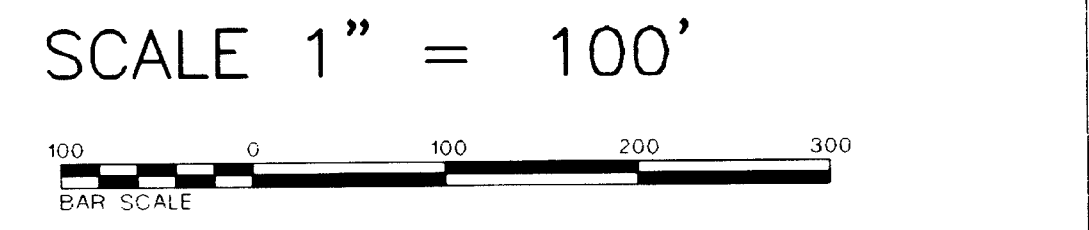
**LEGEND**  
 1:50,000

□	FOUND SURVEY MARKER
○	PLACED SURVEY MARKER
○	FOUND SURVEY MARKER
○	RADIUS
○	LANDS DEALT WITH BY THIS PLAN
○	POINT OF CURVATURE
○	LENGTH OF ARC
○	POINT OF CURVATURE
○	WITNESS
○	FENCE
○	HYDRO POLE
○	CALCULATED POINT

- NOTES**
1. THE FIELD WORK FOR THIS SURVEY WAS EXECUTED DURING MARCH, 2004.
  2. FIELD MEASUREMENTS HAVE BEEN ADJUSTED BY THE COMPASS RULE AND SCALE FACTOR HAS NOT BEEN APPLIED.
  3. AZIMUTHS ARE GRID.
  4. ALL GRID AZIMUTHS AND COORDINATES ARE REFERENCED TO THE PRINCE EDWARD ISLAND STEREOGRAPHIC PROJECTION, PRIOR TO JULY 1, 1979.
  5. ALL DIMENSIONS ARE GIVEN IN FEET, UNLESS NOTED.

**LOCUS SURVEYS LTD.**  
 16 PAIN ROAD  
 P.O. BOX 35  
 HENRIKSTON, P.E.I.  
 C0B 1M0  
 PHONE 902-836-3823  
 FAX 902-836-5463  
 TOLL FREE NUMBER 1-888-328-8888

PLAN OF SURVEY SHOWING  
 LOTS A-01 TO A-20,  
 BEING PHASE 1 OF  
 GRANVILLE ON THE  
 WATER SUBDIVISION



REVISION	DESCRIPTION	DATE
1	ADDING ELECTRIC EASEMENTS	APRIL 23, 2004

NORTH GRANVILLE  
 QUEENS COUNTY  
 DRAWN BY: N.G.  
 DRAWING No. 03280

LOT 21  
 P.E.I.  
 ORTHO No. 11L 06 1E2  
 P.I.D. No. 94714

I, JAMES A. CLOW, PRINCE EDWARD ISLAND LAND SURVEYOR, DO HEREBY  
 CERTIFY THAT THIS SURVEY WAS EXECUTED UNDER MY DIRECTION  
 AND SUPERVISION, AND THAT THIS PLAN IS A TRUE AND CORRECT  
 REPRESENTATION OF SAID SURVEY.

*James A. Clow*  
 JAMES A. CLOW P.E.I. LAND SURVEYOR  
 MARCH 8, 2004.  
 DATE